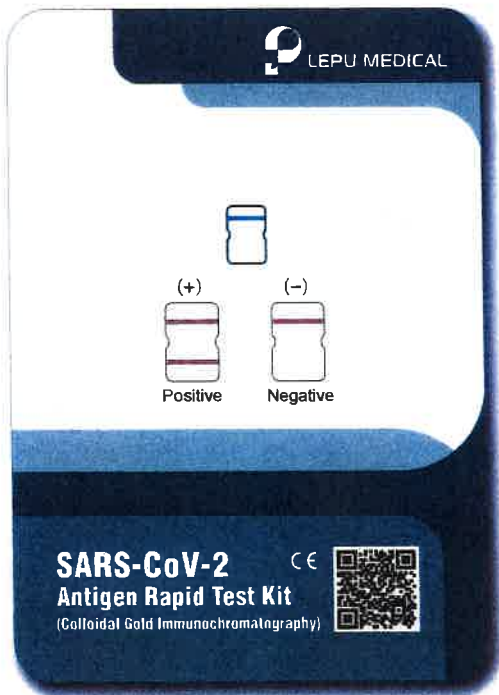


SARS-CoV-2 CE

Antigen Rapid Test Kit

(Colloidal Gold Immunochromatography)



- ① Non-invasive
- ② Simple to use
- ③ Convenient, no devices required
- ④ Rapid, get result in 15 minutes
- ⑤ Stable, with high accuracy
- ⑥ Inexpensive, cost-efficiency



Hospital



Test Site



Airport



Station



Hotel

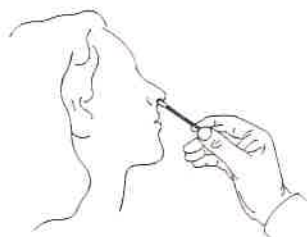


Corporation

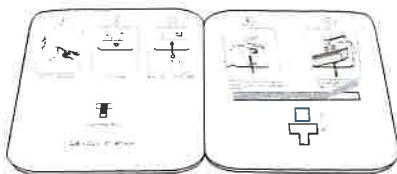


Mass
Screening

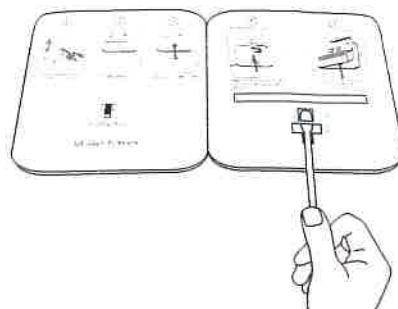
Instruction



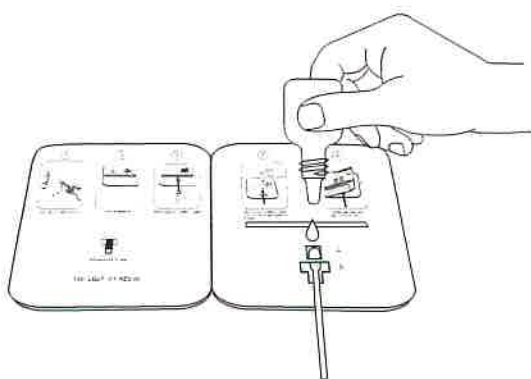
Step 1: Use swab to collect sample.



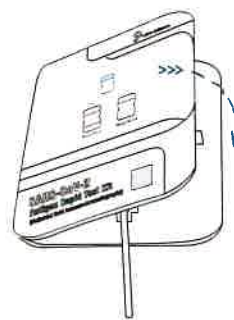
Step 2: Peel off adhesive.



Step 3: Insert swab from well B to well A.



Step 4: a. Add 6 drops of buffer to well A
b. Rotate the shaft, two rounds each direction.

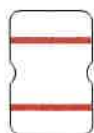


Step 5: Fold left side over, and wait for 15 minutes.

Result Interpretation

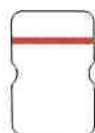
Positive

(+)

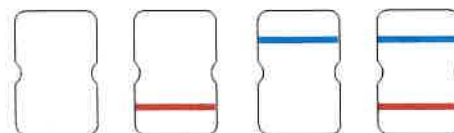


Negative

(-)



Invalid



CONTIPHARMA - Member of BEDELCO GROUP SRL

122 Rue de l'Environnement - 4100 Seraing - Belgique

Email: info@contipharma.com - Ph. +32 4 330 18 60

Web: <https://contipharma-covid19.com/>